

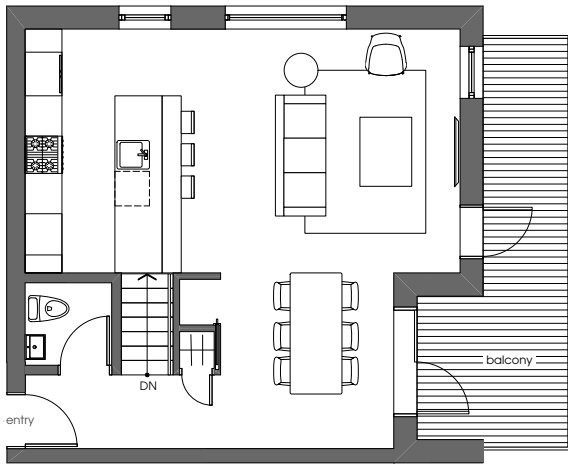
DRIFTWOOD

PASSIVE HOUSE | ACTIVE LIFE

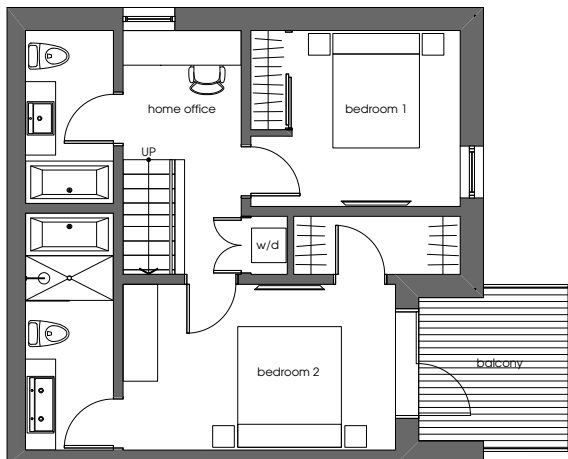
672 North Road | Gibsons BC

213

TWO
BEDROOM



ENTRY LEVEL



LOWER LEVEL



FEATURES

- Passive House construction
- Two bedrooms
- Two and a half bathrooms
- Two balconies
- Home office space
- Vaulted double-height ceiling
- Potential loft storage space
- European style kitchen
- Two parking stalls with EV chargers (rough-in ready)
- Access to amenity room
- Bedroom level washer / dryer
- Bicycle / storage locker in common area

AREA (As per strata plan)

- Interior ~1341 sq ft
- Exterior ~228 sq ft



KEY PLAN

