

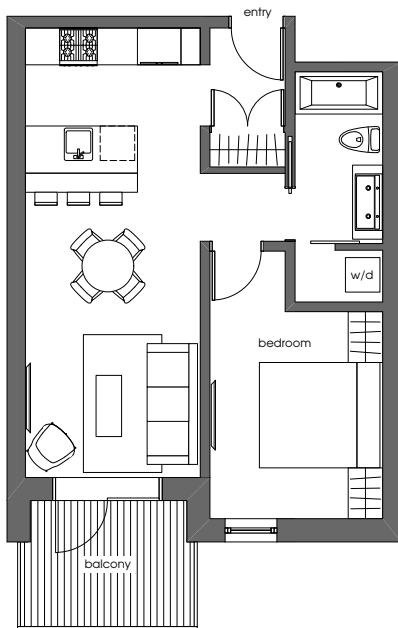
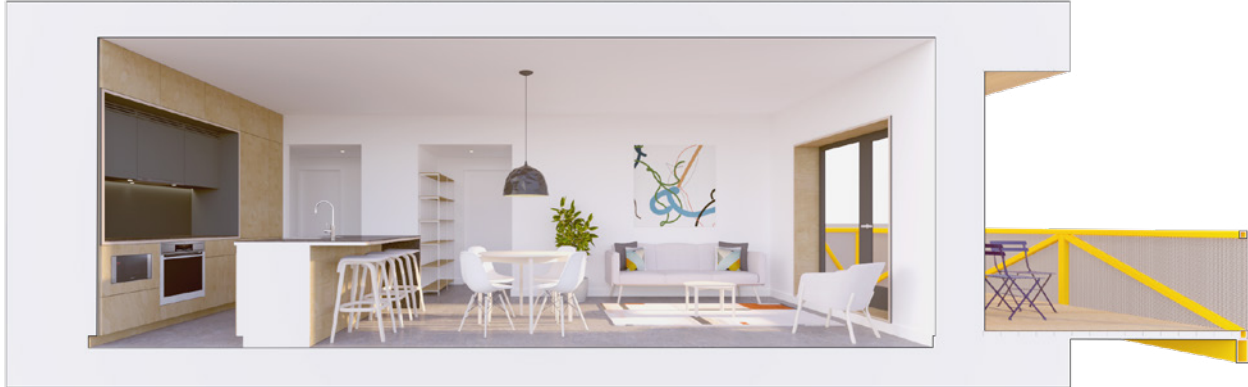
# DRIFTWOOD

PASSIVE HOUSE | ACTIVE LIFE

672 North Road | Gibsons BC

# 209

ONE  
BEDROOM



ENTRY LEVEL

## FEATURES

- Passive House construction
- One bedroom
- One bathroom
- One large balcony
- European style kitchen
- One parking stall with EV charger (rough-in ready)
- Access to amenity room
- Washer / dryer
- Bicycle / storage locker in common area

## AREA (As per strata plan)

- Interior ~640 sq ft
- Exterior ~75 sq ft



KEY PLAN

