

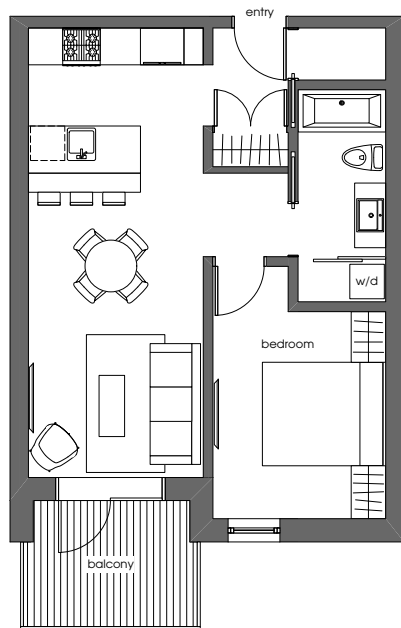
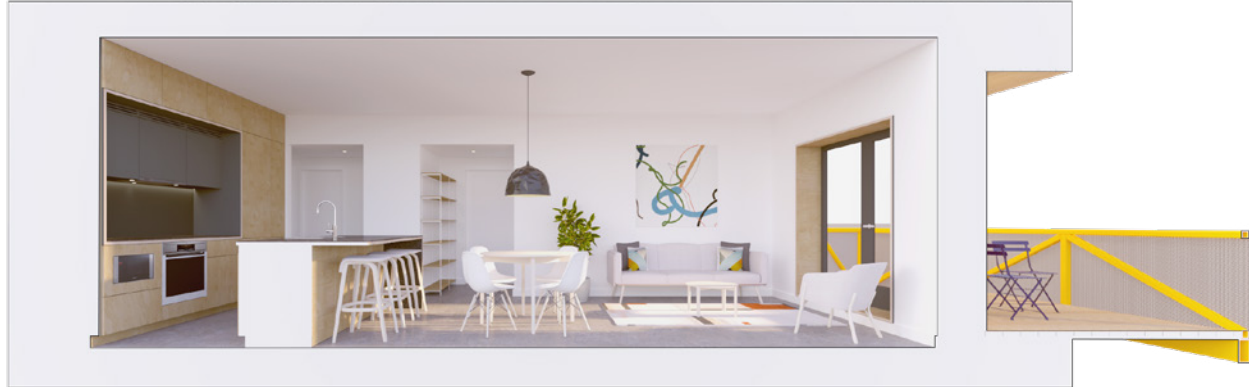
DRIFTWOOD

PASSIVE HOUSE | ACTIVE LIFE

672 North Road | Gibsons BC

207

ONE
BEDROOM



ENTRY LEVEL

FEATURES

- Passive House construction
- One bedroom
- One bathroom
- One balcony
- European style kitchen
- One parking stall with EV charger (rough-in ready)
- Access to amenity room
- Washer / dryer
- In-suite storage
- Bicycle / storage locker in common area

AREA (As per strata plan)

- Interior ~633 sq ft
- Exterior ~75 sq ft



KEY PLAN

N↑

